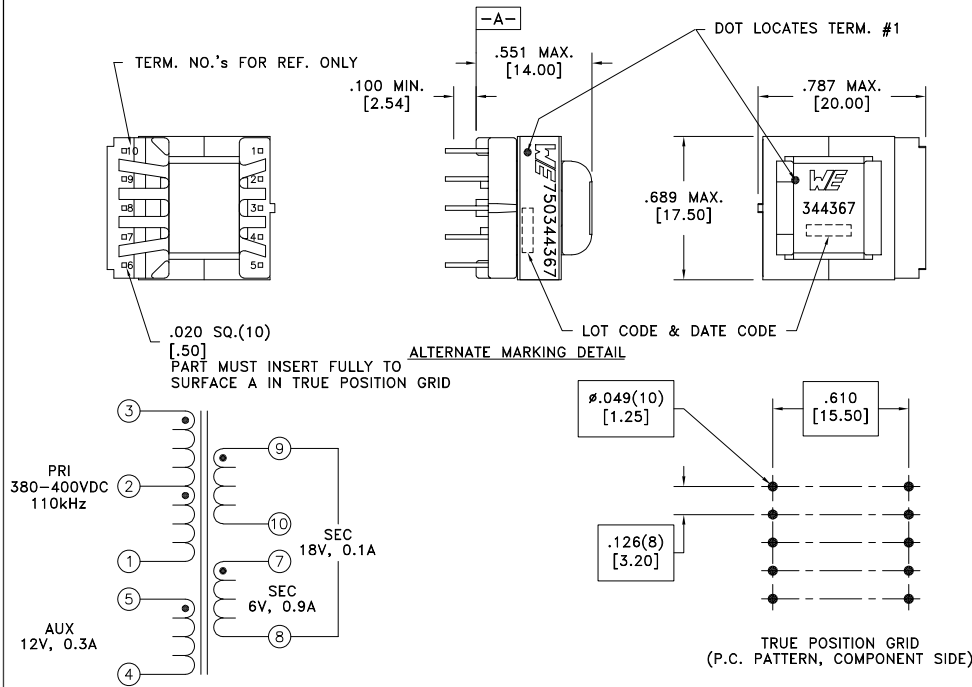


CUSTOMER TERMINAL	RoHS	LEAD(Pb)-FREE
Sn96%, Ag4%	Yes	Yes



ELECTRICAL SPECIFICATIONS @ 25°C unless otherwise noted:

PARAMETER	TEST CONDITIONS	VALUE
D.C. RESISTANCE	3-1 @20°C	2.67 ohms max.
D.C. RESISTANCE	9-10 @20°C	0.21 ohms max.
D.C. RESISTANCE	7-8 @20°C	0.03 ohms max.
D.C. RESISTANCE	5-4 @20°C	0.12 ohms max.
INDUCTANCE	3-1 100kHz, 100mVAC, Ls	1.60mH ±10%
SATURATION CURRENT	3-1 20% rolloff from initial	300mA
LEAKAGE INDUCTANCE	3-1 tie(4+5+7+8+9+10), 100kHz, 100mVAC, Ls	15uH max.
DIELECTRIC	3-9 tie(3+4, 8+9), 3750VAC, 1 second	3000VAC, 1 minute
DIELECTRIC	3-5 625VAC, 1 second	500VAC, 1 minute
DIELECTRIC	9-7 1250VAC, 1 second	1000VAC, 1 minute
URNS RATIO	(3-1):(9-10)	8:1
URNS RATIO	(3-1):(7-8)	16:1
URNS RATIO	(3-1):(5-4)	8:1



GENERAL SPECIFICATIONS:

OPERATING TEMPERATURE RANGE: -40°C to +125°C including temp rise.

Designed to comply with the following requirements as defined by IEC62368-1, EN62368-1, UL62368-1/CSA62368-1 and AS/NZS62368.1:
 - Reinforced insulation for a primary circuit at a working voltage of 285Vrms, 420Vpeak, Overvoltage Category II, Pollution Degree 2.

Wire insulation & RoHS status not affected by wire color.
 Wire insulation color may vary depending on availability.

REV.	DATE	Packaging Specifications Method: Tape & Reel PKG-0887 www.we-online.com/midcom		Tolerances unless otherwise specified: Angles: ±1° Fractions: ±1/64 Decimals: ±.005 [.13] Footprint: ±.001 [.03]	DRAWING TITLE TRANSFORMER	PART NO. 750344367
6A	6/21	SEE REVISION SHEET FOR REVISION LEVEL		This drawing is dual dimensioned. Dimensions in brackets are in millimeters.	eiSos p/n: 750344367	SPECIFICATION SHEET 1 OF 1