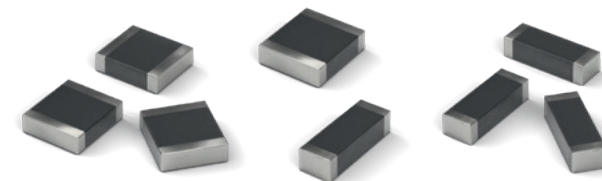


WE-MPSA EMI Multilayer Power Suppression Bead



0805		0805		0805		1206		1206	
782 792 20 800		782 792 20 321		782 792 20 601		782 792 21 281		782 792 21 601	
Z @ 100 MHz:	80 Ω	Z @ 100 MHz:	320 Ω	Z @ 100 MHz:	600 Ω	Z @ 100 MHz:	280 Ω	Z @ 100 MHz:	600 Ω
R _{DC} :	18 mΩ	R _{DC} :	50 mΩ	R _{DC} :	80 mΩ	R _{DC} :	35 mΩ	R _{DC} :	50 mΩ
I _R :	4 A	I _R :	2.5 A	I _R :	2.1 A	I _R :	3.5 A	I _R :	2.5 A
1612		1812		2220		2220		2220	
782 792 23 560		782 792 26 101		782 792 24 101		782 792 24 151		782 792 24 171	
Z @ 100 MHz:	56 Ω	Z @ 100 MHz:	100 Ω	Z @ 100 MHz:	100 Ω	Z @ 100 MHz:	150 Ω	Z @ 100 MHz:	170 Ω
R _{DC} :	4 mΩ	R _{DC} :	6 mΩ	R _{DC} :	5 mΩ	R _{DC} :	10 mΩ	R _{DC} :	15 mΩ
I _R :	10 A	I _R :	8 A	I _R :	7 A	I _R :	5 A	I _R :	4 A
2220		2220		2220		2220		3312	
782 792 24 181		782 792 24 271		782 792 24 401		782 792 24 551		782 792 25 101	
Z @ 100 MHz:	180 Ω	Z @ 100 MHz:	270 Ω	Z @ 100 MHz:	400 Ω	Z @ 100 MHz:	550 Ω	Z @ 100 MHz:	100 Ω
R _{DC} :	10 mΩ	R _{DC} :	20 mΩ	R _{DC} :	20 mΩ	R _{DC} :	35 mΩ	R _{DC} :	4 mΩ
I _R :	5 A	I _R :	4 A	I _R :	4.5 A	I _R :	4 A	I _R :	10 A

EMC COMPONENTS | INDUCTORS | TRANSFORMERS | RF COMPONENTS | CIRCUIT PROTECTION | EMC SHIELDING MATERIAL | LEDs | CONNECTORS | SWITCHES | ASSEMBLY TECHNIQUE | REDCUBE TERMINALS | CAPACITORS

Important information: Würth Elektronik's design kits contain reference components. These components correspond with the current product development status on the day of supply. Exchange of the reference components to components with up-to-date product development status is not carried out automatically. No liability is taken for the use of these reference components. Therefore, please request new samples prior to releases for series production and product release.

Please check datasheets on www.we-online.com for specifications. Würth Elektronik eiSos GmbH & Co. KG, EMC & Inductive Solutions. © 2020

www.we-online.com

All products
in stock!