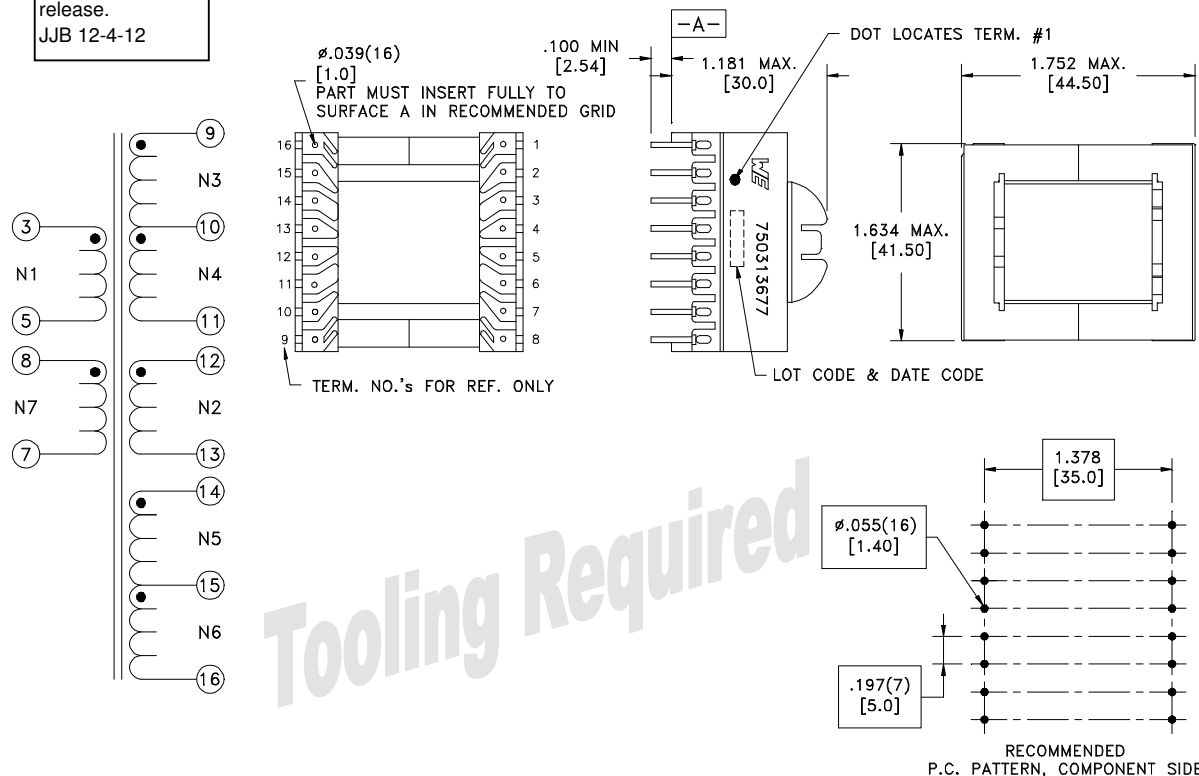


CUSTOMER TERMINAL	RoHS	LEAD(Pb)-FREE
Sn96%, Ag4%	Yes	Yes



Update view upon release.  
JJB 12-4-12



Tooling Required

Reference Design

**ELECTRICAL SPECIFICATIONS @ 25°C unless otherwise noted:**

D.C. RESISTANCE (@20°C):	3-5 , 0.084 Ohms $\pm 10\%$ .
DIELECTRIC RATING:	4000VAC, 1 minute tested by applying 5000VAC for 1 second between pins 3-16 (tie 5+7, 11+13+14). 1500VAC, 1 minute tested by applying 1875VAC for 1 second between pins 3-core (tie 5+7, 8+9, 11+13+14).
INDUCTANCE:	450 $\mu$ H $\pm 10\%$ , 10kHz, 100mVAC, 0mADC, 3-5, Ls.
LEAKAGE INDUCTANCE:	115.0 $\mu$ H $\pm 10\%$ , 100kHz, 100mVAC, 3-5(tie 7+8, 9+11, 12+13, 14+16), Ls.
TURNS RATIO:	( 3-5 ):( 12-13 ), ( 7.6 ):(1.00), $\pm 3\%$ . ( 12-13 ):( 9-10 ), ( 2.5 ):(1.00), $\pm 3\%$ . ( 12-13 ):( 10-11 ), ( 2.5 ):(1.00), $\pm 3\%$ . ( 12-13 ):( 14-15 ), ( 1.25 ):(1.00), $\pm 3\%$ . ( 12-13 ):( 15-16 ), ( 1.25 ):(1.00), $\pm 3\%$ . ( 12-13 ):( 8-7 ), ( 1.666 ):(1.00), $\pm 3\%$ .

Wire insulation & RoHS status not affected by wire color. Wire insulation color may vary depending on availability.

OPERATING TEMPERATURE RANGE: -40°C to 125°C including temp. rise.

Safety Standard Undefined

<b>Würth Electronics Midcom Inc.</b>  Watertown, SD USA Toll Free: 800-643-2661 Fax: 605-886-4486	Unless otherwise specified, tolerances are as follows: Angles: $\pm 1^\circ$ Fractions: $\pm 1/64$ Decimals: $\pm 0.005$ (.127mm)    Footprint: $\pm 0.01$ (.03mm)		<b>more than you expect</b>	
	Drawing Title <b>Transformer</b>		Drawing Number <b>750313677</b>	Rev. <b>00</b>
This drawing is dual dimensioned. Dimensions in brackets are in millimeters		Revisions: See Sheet 1		Scale ----    Spec Sheet 1 of 1
Engineer: JJB			03/10/2014	