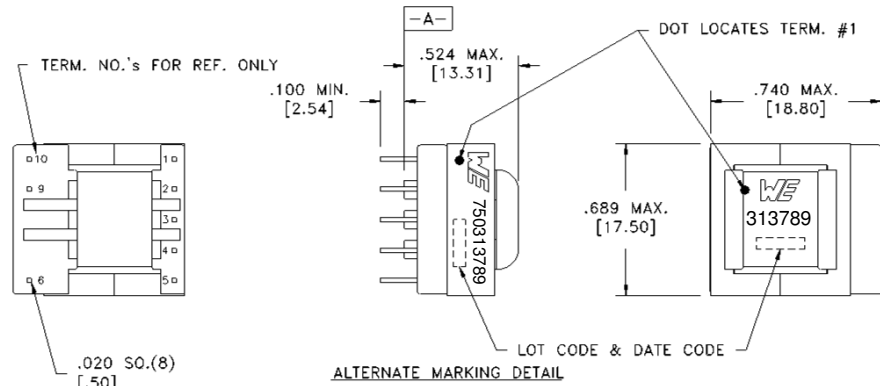
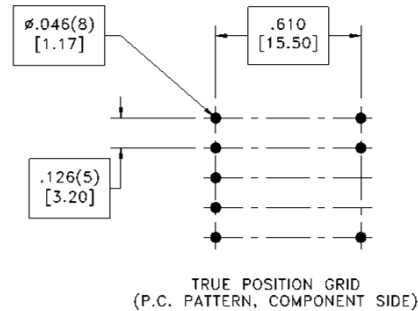
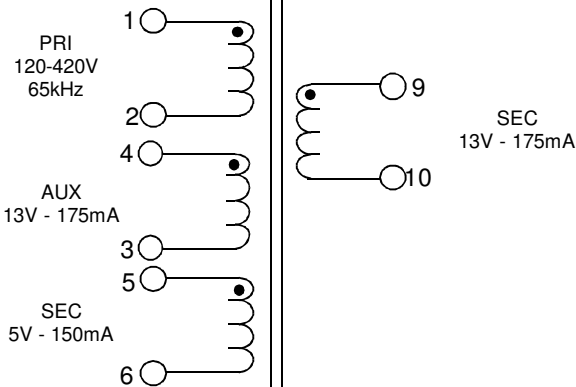


CUSTOMER TERMINAL	RoHS	LEAD(Pb)-FREE
Sn96%, Ag4%	Yes	Yes



.020 SO.(8)
[.50]
PART MUST INSERT FULLY TO
SURFACE A IN TRUE POSITION GRID



TRUE POSITION GRID
(P.C. PATTERN, COMPONENT SIDE)

ELECTRICAL SPECIFICATIONS @ 25°C unless otherwise noted:

D.C. RESISTANCE (@20°C):	1-2 , 2.60 Ohms ±10%. 3-4 , 0.215 Ohms ±10%. 5-6 , 0.075 Ohms ±20%. 9-10 , 0.140 Ohms ±10%.
DIELECTRIC RATING:	3000VAC, 1 minute tested by applying 3750VAC for 1 second between pins 1-10(tie 3+4, 7+9). 500VAC, 1 minute tested by applying 625VAC for 1 second between pins 1-4.
INDUCTANCE:	2.80 mH ±10%, 10kHz, 100mVAC, 0mADC, 1-2, Ls.
SATURATION CURRENT:	350mA saturating current that causes 20% rolloff from initial inductance.
LEAKAGE INDUCTANCE:	65µH typ, 85µH max, 100kHz, 100mVAC, 1-2(tie 3+4, 5+6+9+10), Ls.
URNS RATIO:	(1-2):(4-3) , (11.07):(1.00) , ±1%. (1-2):(5-6) , (24.00):(1.00) , ±1%. (1-2):(9-10) , (11.07):(1.00) , ±1%.

Designed to comply with the following requirements as defined by IEC60950-1, EN60950-1, UL60950-1/CSA60950-1 and AS/NZS60950.1:
- Reinforced insulation for a primary circuit at a working voltage of 420VDC.

OPERATING TEMPERATURE RANGE: -40°C to 125°C including temp. rise.

Wire insulation & RoHS status not affected by wire color. Wire insulation color may vary depending on availability.

Würth Electronics Midcom Inc. Watertown, SD USA Toll Free: 800-643-2661 Fax: 605-886-4486	Unless otherwise specified, tolerances are as follows: Angles: ±1° Fractions: ±1/64 Decimals: ±.005(.127mm) Footprint: ±.001(.03mm)	more than you expect	
	Drawing Title <h1>Transformer</h1>	Drawing Number <h1>750313789</h1>	Rev. <h1>01</h1>
This drawing is dual dimensioned. Dimensions in brackets are in millimeters	Revisions: See Sheet 1	Scale ----	Spec Sheet 1 of 1

Engineer:LJG

05/03/2017