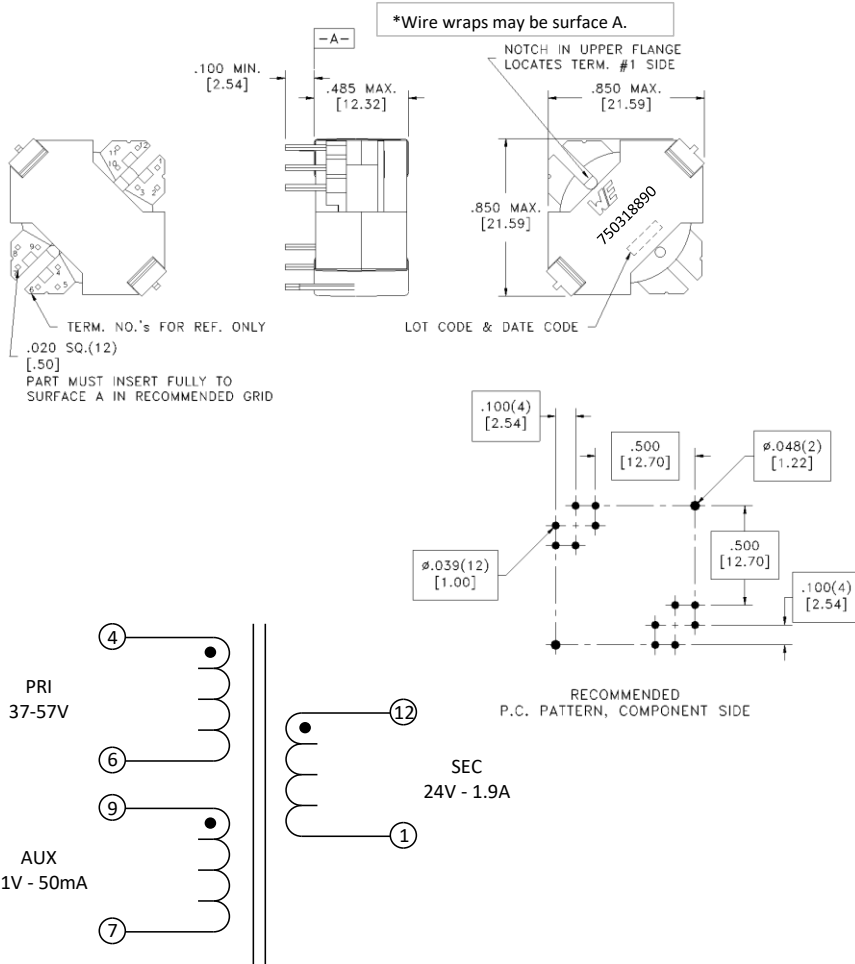


CUSTOMER TERMINAL	RoHS	LEAD(Pb)--FREE
Sn 96%, Ag 4%	Yes	Yes



ELECTRICAL SPECIFICATIONS @ 25° C unless otherwise noted:

PARAMETER	TEST CONDITIONS	VALUE
D.C. RESISTANCE	1-12 @20°C	0.020 ohms ±20%
D.C. RESISTANCE	4-6 @20°C	0.040 ohms ±20%
D.C. RESISTANCE	7-9 @20°C	0.085 ohms ±20%
INDUCTANCE	4-6 200kHz, 100mV, Ls	30.00µH ±5%
SATURATION CURRENT	4-6 20% rolloff from initial	7.3 A
LEAKAGE INDUCTANCE	4-6 tie(7+9, 1+12),200kHz, 100mV, Ls	650 nH max.
INTERWINDING CAPACITANCE	1-4 100kHz , 10mVAC, Cs	22pF typ.
DIELECTRIC	1-4 tie(6+7), 3000VAC, 1 second	3000VAC, 1 minute
DIELECTRIC	4-7 625VAC, 1 second	
DIELECTRIC	1-Core 3000VAC, 1 second	
URNS RATIO	(4-6):(12-1)	2:1, ±1%
URNS RATIO	(4-6):(9-7)	2.5:1, ±1%



GENERAL SPECIFICATIONS:

OPERATING TEMPERATURE RANGE: -40°C to +125°C including temp rise.

Safety standard undefined

Wire insulation & RoHS status not affected by wire color. Wire insulation color may vary depending on availability.

DFM	Packaging Specifications	 CONVENTION PLACEMENT	Tolerances unless otherwise specified: Angles: ±1° Decimals: ±.005 [.13] Fractions: ±1/64 Footprint: ±.001 [.03]	DRAWING TITLE	PART NO.
DATE	Method: Tray		This drawing is dual dimensioned. Dimensions in brackets are in millimeters.	TRANSFORMER	750318890
ENG	PLP	PKG-1137			
REV.	01				
DATE	4/1/2020	www.we-online.com/midcom			SPECIFICATION SHEET 1 OF 1