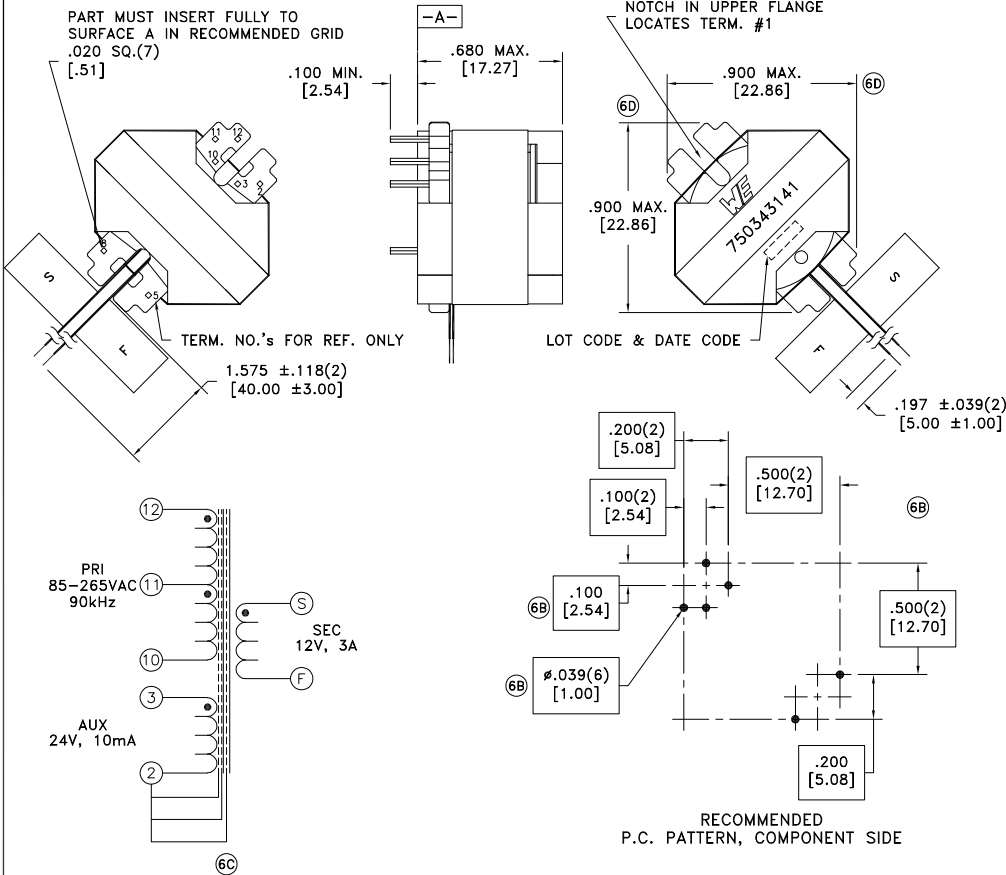


| | | |
|-------------------|------|---------------|
| CUSTOMER TERMINAL | RoHS | LEAD(Pb)-FREE |
| Sn96%, Ag4% | Yes | Yes |



ELECTRICAL SPECIFICATIONS @ 25°C unless otherwise noted:

| PARAMETER | TEST CONDITIONS | VALUE |
|--------------------|---|-------------------|
| D.C. RESISTANCE | 2-3 @20°C | 0.155 ohms max. |
| D.C. RESISTANCE | S-F @20°C | 0.010 ohms max. |
| D.C. RESISTANCE | 12-10 @20°C | 0.230 ohms max. |
| INDUCTANCE | 12-10 10kHz, 1V, Ls | 200.0uH ±10% |
| LEAKAGE INDUCTANCE | 12-10 tie(2+3+S+F), 100kHz, 100mVAC, Ls | 4.0uH max. |
| DIELECTRIC | 12-S tie(2+12), 3750VAC, 1 second | 3000VAC, 1 minute |
| DIELECTRIC | S-Core 3750VAC, 1 second | 3000VAC, 1 minute |
| URNS RATIO | (12-10):(S-F) | 7:1, ±2% |
| URNS RATIO | (12-10):(3-2) | 2.8:1, ±2% |



GENERAL SPECIFICATIONS:

OPERATING TEMPERATURE RANGE: -40°C to +125°C including temp rise.

Designed to comply with the following requirements as defined by IEC60950-1, EN60950-1, UL60950-1/CSA60950-1 and AS/NZS60950.1:
 - Reinforced insulation for a primary circuit at a working voltage of 265Vrms, 400Vpeak, Overvoltage Category II.

Wire insulation & RoHS status not affected by wire color.
 Wire insulation color may vary depending on availability.

| REV. | DATE | Packaging Specifications | CONVENTION PLACEMENT |
|------|-------|---------------------------------------|----------------------|
| 6D | 10/19 | Method: Tray | |
| 6C | 10/17 | PKG-1129 | |
| 6B | 5/17 | www.we-online.com/midcom | |
| 6A | 3/17 | SEE REVISION SHEET FOR REVISION LEVEL | |

Tolerances unless otherwise specified:
 Angles: ±1°
 Fractions: ±1/64
 Decimals: ±.005 [.13]
 Footprint: ±.001 [.03]
 This drawing is dual dimensioned. Dimensions in brackets are in millimeters.

DRAWING TITLE
TRANSFORMER
 eiSos p/n: 750343141

PART NO.
750343141
 SPECIFICATION SHEET 1 OF 1

