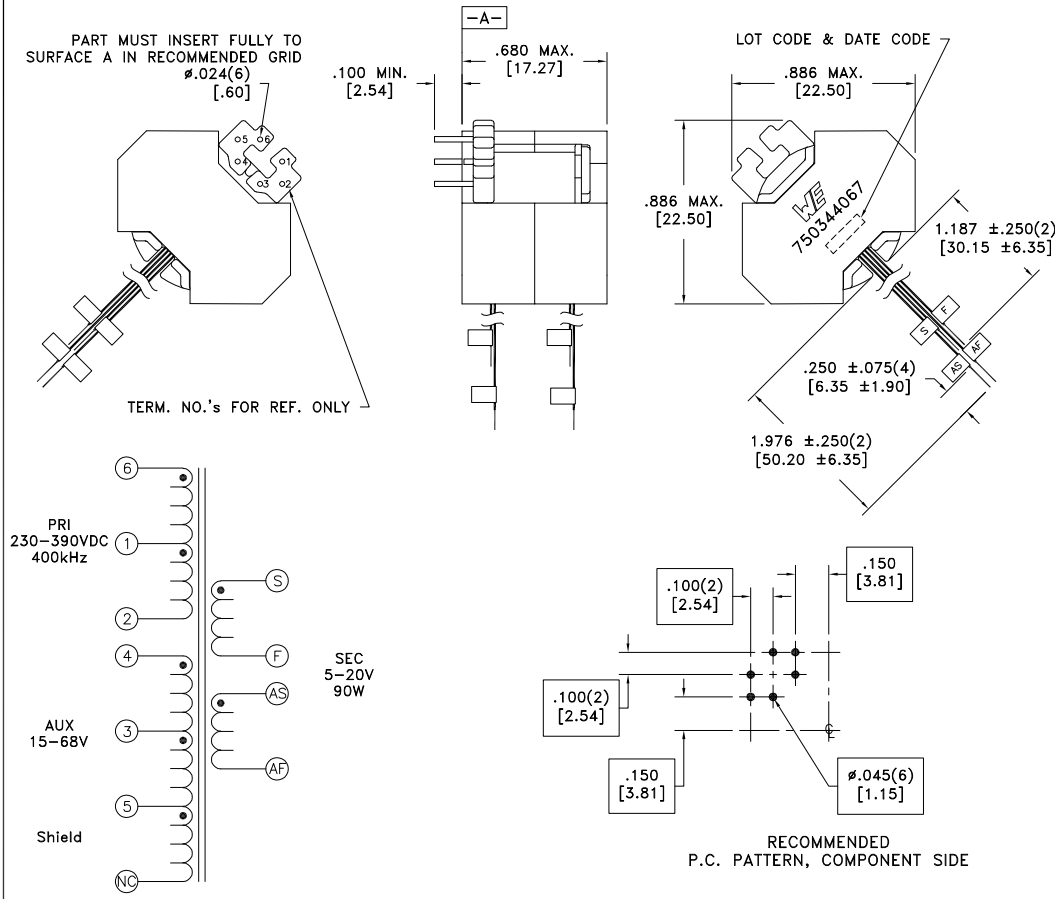


CUSTOMER TERMINAL	RoHS	LEAD(Pb)-FREE
Sn96%, Ag4%	Yes	Yes



ELECTRICAL SPECIFICATIONS @ 25°C unless otherwise noted:

PARAMETER	TEST CONDITIONS	VALUE
D.C. RESISTANCE	2-6 @20°C	0.115 ohms max.
D.C. RESISTANCE	4-5 @20°C	1.065 ohms max.
D.C. RESISTANCE	S-F @20°C	0.024 ohms max.
D.C. RESISTANCE	AS-AF @20°C	0.310 ohms max.
INDUCTANCE	2-6 10kHz, 1VAC, Ls	170.00uH ±10%
LEAKAGE INDUCTANCE	2-6 tie(4+5+S+F+AS+AF), 100kHz, 1VAC, Ls	4.50uH max.
DIELECTRIC	2-S tie(5+6+F+AS), 3000VAC, 1 second	-
TURNS RATIO	(2-6):(4-5)	2:1, ±2%
TURNS RATIO	(2-6):(S-F)	6.8:1, ±2%
TURNS RATIO	(2-6):(AS-AF)	11.33:1, ±2%

GENERAL SPECIFICATIONS:

OPERATING TEMPERATURE RANGE: -40°C to +125°C including temp rise.  
 Designed to comply with the following requirements as defined by IEC60950-1, EN60950-1, UL60950-1/CSA60950-1 and AS/NZS60950.1:  
 - Reinforced insulation for a primary circuit at a working voltage of 265Vrms, 400Vpeak, Overvoltage Category II, Pollution Degree 2.

Wire insulation & RoHS status not affected by wire color.  
 Wire insulation color may vary depending on availability.

REV.	DATE	Packaging Specifications Method: Tray PKG-1137 www.we-online.com/midcom		Tolerances unless otherwise specified: Angles: ±1° Fractions: ±1/64 Decimals: ±.005 [.13] Footprint: ±.001 [.03]	DRAWING TITLE <b>TRANSFORMER</b>	PART NO. <b>750344067</b>
6A	8/19	SEE REVISION SHEET FOR REVISION LEVEL		This drawing is dual dimensioned. Dimensions in brackets are in millimeters.	eiSos p/n: 750344067	compliant RoHS SPECIFICATION SHEET 1 OF 1